

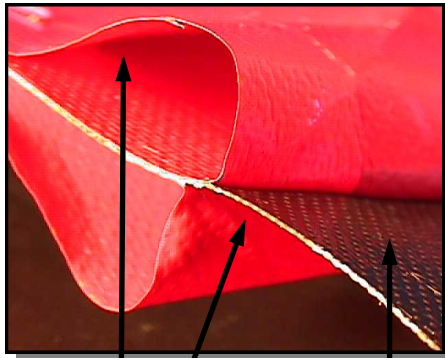


# FILMJAC™ 1900-2 Insulation Jacketing Material

LAMINATED PTFE/TEXTILE COMPOSITES ENGINEERED FOR CORROSIVE REMOVABLE INSULATION SERVICE

## FILMJAC™ 1900-2 Description:

This PTFE/fiberglass composite is designed for harsh, wet insulation jacketing applications. PTFE films are laminated to both sides of the composite for enhanced chemical protection.



0.003" PTFE Film

PTFE Coated  
Fiberglass

\*(Films are red in this photo to show contrast)



- **Successfully used in insulation jacketing applications since 1988**
- **Special coating and film technology for industrial fabrication**
- **Severe chemical and temperature exposure capabilities**
- **Many colors available**
- **Variations engineered upon request**

## FILMJAC™ 1900-2 PROPERTIES

<b>Upper Use Temperature:</b>	600°F (316°C) Continuous Service
<b>Overall Weight:</b>	22 oz/yd <sup>2</sup> (746 (g/m <sup>2</sup> ))
<b>Thickness:</b>	0.018 inches (0.46 mm)
<b>Width:</b>	58 inches (1473 mm)
<b>Tensile Strength (Warp):</b>	275 lbs/inch (2457 N/50 mm)
<b>Tensile Strength (Fill):</b>	225 lbs/inch (2011 N/50 mm)

FILMJAC™ is a trademark of TEXTILES COATED INCORPORATED. This information is supplied in good faith and is based on information currently available. TCI makes NO WARRANTIES, EITHER EXPRESSED OR IMPLIED, INCLUDING ANY WARRANTIES FOR FITNESS, OR USE FOR A PARTICULAR PURPOSE, OR OF ANY MERCHANTABILITY OR AGAINST INFRINGEMENT OR THE LIKE, unless expressly set forth herein.

TEXTILES COATED INTERNATIONAL | Manufacturer of High-Performance Fluoropolymer Films, Laminates, and Composites

200 Bouchard Street, Manchester, NH 03103 USA PHONE: (603) 296-2221 FAX: (603) 296-2248 www.textilescoated.com