



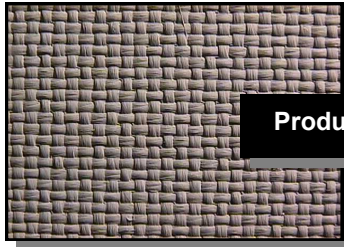
EJ™ 1400 Insulation Jacketing Material

PTFE/FIBERGLASS COMPOSITES ENGINEERED FOR REMOVABLE INSULATION SERVICE

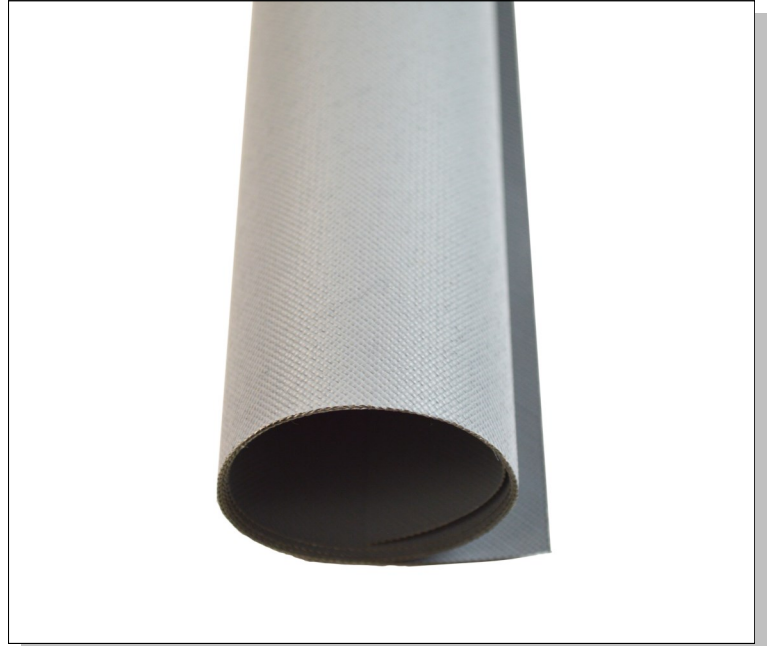
EJ™ 1400 Description:

This PTFE/fiberglass composite is designed for challenging insulation jacketing applications.

- **Successfully used in insulation jacketing service since 1985.**
- **Special coating technology for industrial fabrication**
- **Severe chemical and temperature exposure capabilities**



Product Close-up



- **Product variations available upon request**
- **Easily sewn**
- **Flame-resistant**

EJ™ 1400 PROPERTIES

Upper Use Temperature:	600°F (316°C) Continuous Service
Overall Weight:	13.0 oz/yd ² (442 (g/m ²))
Thickness:	0.011 inches (0.28 mm)
Width:	60 inches (1524 mm) Nominal
Tensile Strength (Warp):	300 lbs/inch (2627 N/50 mm)
Tensile Strength (Fill):	250 lbs/inch (2189 N/50 mm)

This material does not contain an illegal or detectable level of PFOA or PFOS in parts per trillion.

EJ™ is a trademark of TCI (Textiles Coated International). This information is supplied in good faith and is based on information currently available. TCI makes NO WARRANTIES, EITHER EXPRESSED OR IMPLIED, INCLUDING ANY WARRANTIES FOR FITNESS, OR USE FOR A PARTICULAR PURPOSE, OR OF ANY MERCHANTABILITY OR AGAINST INFRINGEMENT OR THE LIKE, unless expressly set forth herein.

TEXTILES COATED INTERNATIONAL | Manufacturer of High-Performance Fluoropolymer Films, Laminates, and Composites

200 Bouchard Street, Manchester, NH 03103 USA PHONE: (603) 296-2221 FAX: (603) 296-2248 www.textilescoated.com