



FEP & PFA Welding Films TS (Tension Structures)

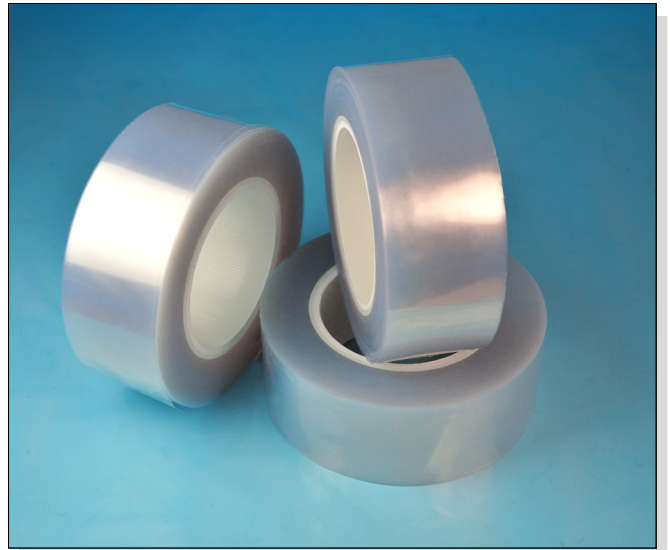
FLUOROPOLYMER EXTRUDED FILMS FOR WELDING AND HEAT SEALING

TCI's FEP and PFA Tension Structures (TS) welding films are ideal for welding or heat sealing various substrates and composite structures such as PTFE-coated fiberglass fabrics. The excellent chemical and temperature resistance of FEP and PFA films allow bonded structures to perform in critical environments. Fluoropolymer films are also flexible adhesives.

TCI FEP and PFA films can be heated together with substrates that are being bonded, and sealed under pressure, utilizing commercial heating techniques such as hot bar sealing.

For heat sealing of PTFE and PTFE-coated fabrics, sealing equipment capable of 700°- 740°F (370-385°C) is typically required.

TCI's FEP and PFA Tension Structures welding films are offered at substantial cost savings (up to 25%) versus premium grade films, making them an economical solution for these applications.



General Availability:

- Thickness range from 0.001" to 0.010" (25 to 250 μ m)
- Standard width: 60" (1,524 mm)
- Any slit widths available upon request

This information is supplied in good faith and is based on information currently available. TCI makes NO WARRANTIES, EITHER EXPRESSED OR IMPLIED, INCLUDING ANY WARRANTIES FOR FITNESS, OR USE FOR A PARTICULAR PURPOSE, OR OF ANY MERCHANTABILITY OR AGAINST INFRINGEMENT OR THE LIKE, unless expressly set forth herein.

TEXTILES COATED INTERNATIONAL | Manufacturer of High-Performance Fluoropolymer Films, Laminates, and Composites

200 Bouchard Street, Manchester, NH 03103 USA PHONE: (603) 296-2221 FAX: (603) 296-2248 www.textilescoated.com



FEP & PFA Welding Films TS (Tension Structures)

FLUOROPOLYMER EXTRUDED FILMS FOR WELDING AND HEAT SEALING

			FEP TS	PFA TS
General Properties	Units	Test Method		
Specific Gravity		ASTM D792	2.15	
Area Yield	ft ² /lb/mil (m ² /kg/25μ)		90 (18.3)	
Flammability		UL-94	V-0	
Mechanical Properties				
Tensile Strength	psi (mpa)	ASTM D882	3,500 (24)	3,000 (21)
Elongation at Break	%	ASTM D882	300	300
Tensile Modulus	psi (mpa)	ASTM D882	70,000 (483)	70,000 (483)
Initial Tear Strength (50 micron film)	g	ASTM D1004	550	500
Propagation Tear Strength (50 micron film)	g	ASTM D1922	250	250
Folding Endurance (MIT)	cycles	ASTM D2176	10,000	>100,000
Thermal Properties				
Melt Point	°F (°C)	ASTM D3418	500 (260)	580 (305)
Coeff. of Lin. Thermal Expansion	in/(in °F)	ASTM D696	5.5x10 ⁻⁵	5.5x10 ⁻⁵
Product Offering				
Width	inches (mm)		Up to 60" (1,524)	
Thickness	mils (μm)		1 - 10 (25-250)	

The above table contains typical representative values and is not to be used for product specification. Contact TCI for a formal specification.

This information is supplied in good faith and is based on information currently available. TCI makes NO WARRANTIES, EITHER EXPRESSED OR IMPLIED, INCLUDING ANY WARRANTIES FOR FITNESS, OR USE FOR A PARTICULAR PURPOSE, OR OF ANY MERCHANTABILITY OR AGAINST INFRINGEMENT OR THE LIKE, unless expressly set forth herein.