



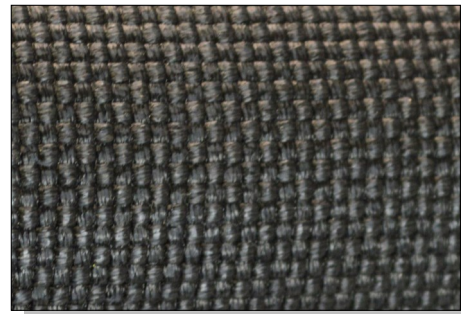
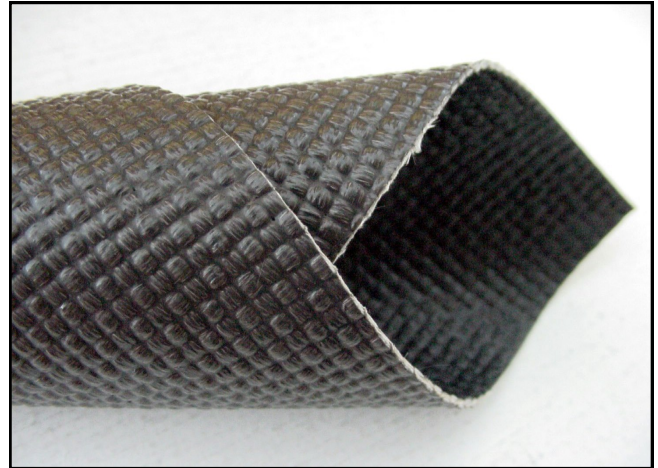
# TEXFILM™ Expansion Joint Materials

LAMINATED PTFE/FIBERGLASS COMPOSITES ENGINEERED FOR DRY GAS SEAL SERVICE

## TEXFILM™ 1405 Description:

TEXFILM™ 1405 is engineered for dry, gas seal service. A 0.005" (0.13 mm) PTFE film is laminated to the **TEXCOAT™ 1400** product.

- **Successfully used in expansion joint service since 1990.**
- **Proven coating and lamination technology for industrial fabrication.**
- **Severe chemical and temperature exposure capabilities.**
- **Variations engineered upon request.**



## TEXFILM™ 1404 PROPERTIES

<b>Upper Use Temperature:</b>	600°F (316°C) Continuous Service
<b>Weight:</b>	53 oz/yd <sup>2</sup> (1802 g/m <sup>2</sup> )
<b>Thickness:</b>	0.045" (1.14 mm)
<b>Width:</b>	60" (1524 mm) Nominal
<b>Tensile Strength (Warp):</b>	1200 lbs/in (10724 N/50 mm)
<b>Tensile Strength (Fill):</b>	1200 lbs/in (10724 N/50 mm)

TEXFILM and TEXCOAT are trademarks of TEXTILES COATED INTERNATIONAL. Patents worldwide This information is supplied in good faith and is based on information currently available. TCI makes NO WARRANTIES, EITHER EXPRESSED OR IMPLIED, INCLUDING ANY WARRANTIES FOR FITNESS, OR USE FOR A PARTICULAR PURPOSE, OR OF ANY MERCHANTABILITY OR AGAINST INFRINGEMENT OR THE LIKE, unless expressly set forth herein.

TEXTILES COATED INTERNATIONAL | Manufacturer of High Performance PTFE Composites and Laminates

200 Bouchard Street, Manchester, NH 03103

PHONE: (603) 296-2221

FAX: (603) 296-2248

www.textilescoated.com