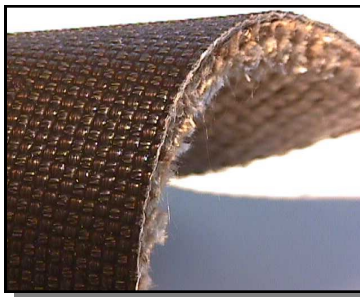
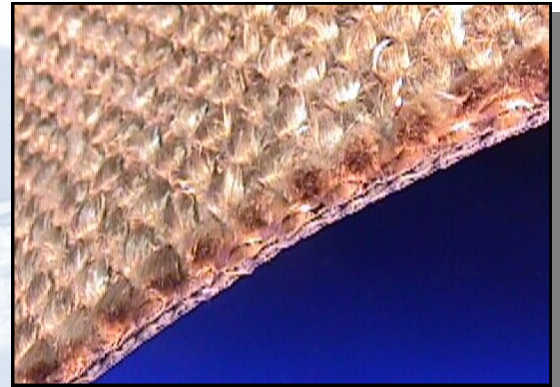




Advantages of *THERMALAM*[™] Technology

HIGH TEMPERATURE EXPANSION JOINT MATERIAL TECHNOLOGY

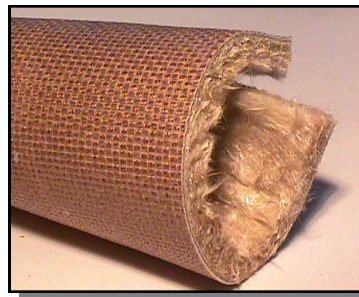
- *THERMALAM*[™] materials are designed for expansion joints with temperature requirements over 600°F (316°C)
- Extends life of insulation component
- Adheres insulation to belt to prevent hot gas from residing between the two components
- Prevents insulation from falling into duct
- Makes installation easier
- Fabricated into all expansion joint shapes and sizes
- *THERMALAM*[™] 12, 50, and 100 Technology can be used with all TCI materials



THERMALAM[™] 12

Rugged, woven, 1/8" fiberglass that increases the upper temperature capability of all *TEXFILM*[™], *TEX-LFP*[™], and *LFP CrossFilm*[™] expansion joint products.

Rated to 700°F (371°C)



THERMALAM[™] 50

Laminated, nonwoven, 1/2" fiberglass mat that increases the upper temperature capability of all *TEXFILM*[™], *TEX-LFP*[™], and *LFP CrossFilm*[™] expansion joint products.

Rated to 1000°F (538°C)



THERMALAM[™] 100

Rugged, woven, 3/8" fiberglass that increases the upper temperature capability of all *TEXFILM*[™], *TEX-LFP*[™], and *LFP CrossFilm*[™] expansion joint products.

Rated to 850°F (454°C)

THERMALAM[™], *CrossFilm*[™], *TEX-LFP*[™], and *TEXFILM*[™] are trademarks of TEXTILES COATED INTERNATIONAL. Patented worldwide. This information is supplied in good faith is based on information currently available. TCI makes NO WARRANTIES, EITHER EXPRESSED OR IMPLIED, INCLUDING ANY WARRANTIES FOR FITNESS, OR USE FOR A PARTICULAR PURPOSE, OR ANY MERCHANTABILITY OR AGAINST INFRINGEMENT OR THE LIKE, unless expressly set forth herein.

TEXTILES COATED INTERNATIONAL | Manufacturer of High Performance PTFE Composites and Laminates

200 Bouchard Street, Manchester, NH 03103

PHONE: (603) 296-2221

FAX: (603) 296-2248

www.textilecoated.com